

## **CONTESTANT DIVISIONS**

Students compete in **three divisions** based on grade level: **Rookie** (5th and 6th), **Junior** (7th and 8th), and **Senior** (9th through 12th).

The **Rookie Division** is tested on five manual subjects: 1) Log Scaling, 2) Timber Cruising, 3) Tree and Plant Identification, 4) Map Reading and 5) Compass and Pacing. Rookies are also introduced to Silviculture but are not tested on this subject.

The **Junior and Senior Divisions** are tested on nine of the ten manual subjects: 1) Log Scaling, 2) Timber Cruising, 3) Tree and Plant Identification, 4) Map Reading, 5) Compass and Pacing, 6) Tool Identification, 7) Soils and Water Quality, 8) Tree Health, 9) Silviculture, and 10) Noxious Weeds. One subject is dropped each year.

Each contestant competes for an individual score. Contestants can also choose to compete as part of a team. **Teams** consist of four people within the same division. The individual scores are combined into the team score.

Each division competes on a **Course**.

## **COURSES – CONTEST TESTING LAYOUT**

The **Course** is the field location where contestants are tested. Each course is comprised of the appropriate number of **Stations**. Each station corresponds to a manual chapter subject. The number of stations depends on the division, as described above. Contestants (organized into color-coded groups, see below) test at each station and rotate through all the stations during the contest.

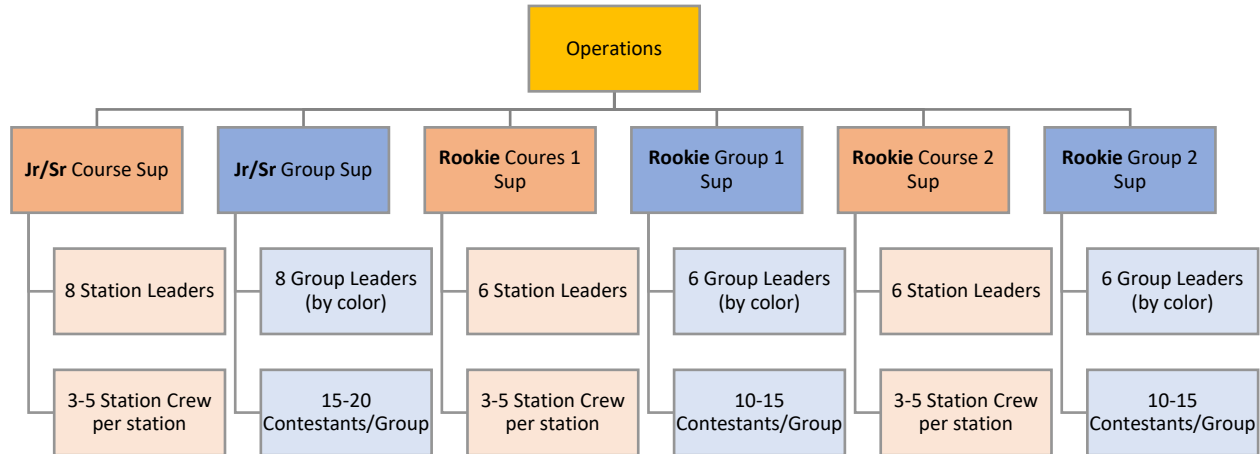
There are typically two **Rookie Courses** (with six stations) due to the high number of participants.

There has historically been one **Junior/Senior Course** (with eight stations, one station combines two tests, and one subject is dropped). Juniors and Seniors compete together on the same course. If there are more than 160 contestants, a second course should be established.

## **CONTEST SUPERVISION**

The **Operations Section** personnel are responsible for the setting up of the courses and directing contestants through the contest. The Operations personnel oversee the Course Supervisors and the Group Supervisors.

## Idaho State Forestry Contest Roles and Terms for Volunteers



Each course is supervised by a **Course Supervisor**. The Course Supervisor is responsible for the following:

- Setting up each station on the course prior to contest day.
- Produce Keys for each station.
- Making sure all station equipment is in place on contest morning.
- Contacting the station leaders prior to the contest to discuss station crew staffing.
- Encourage station leaders to be familiar with manual chapters for their respective station.
- Bring all equipment back to ICP at the conclusion of the contest.
- The morning of the contest, meet each **station leader** (see below) and ensure they are in place and knowledgeable.

The Course Supervisor oversees the **Station Leaders**. There are six station leaders for the rookie course and eight for the junior/senior course. The station leader provides direction and guidance to the **Station Crew**. The station crew is responsible for facilitating contestants through the station. The number of crew varies between stations. The station leader needs to be very familiar with the station subject and the manual to address any questions. The station crew should have some knowledge of the station subject and be familiar with the manual. A copy of the relevant chapter is provided in the tub for each station.

### CONTESTANT ORGANIZATION - GROUPS

Contestants are organized by Division and broken into color coded **Groups**.

Each group is led by a **Group Leader**. The group leader is responsible for navigating their group of 10 to 15 kids to each station in the course. They must understand the color coding of the brochures, know which station to start at and the route through the course.

The group leaders report to the **Group Supervisor**. The Supervisor assembles their group leaders prior to the contest and ensures they know where their course is, which station to start at, and the route through the course. The supervisor must thoroughly understand the color coding of the brochures and the layout of the course that they will be leading the groups through.

## *Idaho State Forestry Contest Roles and Terms for Volunteers*

### **Contest morning – Registration**

It is important that registration personnel are very intentional in making sure all volunteers and coaches know exactly to whom to report to reduce confusion and ensure a smooth start to the morning.

Operations, Course Supervisors, Group Supervisors and Station Leaders all need to be present and accessible.

### **Volunteer Registration**

It is important for every volunteer to know where and to whom they are to report. This contact needs to be made immediately upon registering. It is very important for this contact to be made to ensure directions are clear and confusion is minimized.

### **Definitions:**

**Course:** Series of stations the contestant groups move between during the contest. There are Rookie Course(s) and Junior/Senior Course(s).

**Division:** Age Group. Rookie (5<sup>th</sup> and 6<sup>th</sup>), Junior (7<sup>th</sup> and 8<sup>th</sup>) and Senior (9<sup>th</sup> through 12<sup>th</sup>)

**Station:** Manual subject. 1) Log Scaling, 2) Timber Cruising, 3) Tree and Plant Identification, 4) Map Reading, 5) Compass and Pacing, 6) Tool Identification, 7) Soils and Water Quality, 8) Tree Health, 9) Silviculture, and 10) Noxious Weeds.